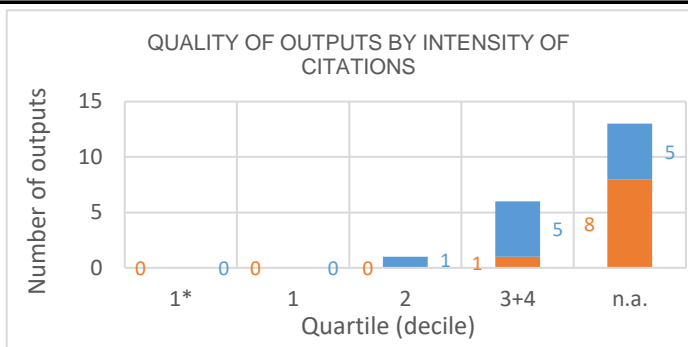
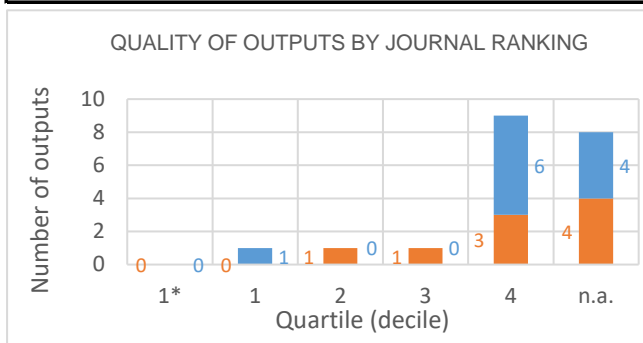


Evaluation of the Research and Professional Activities of the Institutes of the Czech Academy of Sciences for 2015–2019

BIBLIOMETRIC PARAMETERS OF ALL OUTPUTS INCLUDING THOSE EVALUATED IN THE PHASE I.

Institute: Institute of Sociology of the CAS, v. v. i.
Team: Economic Sociology
Head: doc. Ing. Jiří Večerník, CSc.
Field: Sociology
Total number of outputs: 20 **Evaluated outputs:** 9



TYPES OF COLLABORATION

Collaboration	Outputs (evaluated)	Outputs (not evaluated)
A1	3	8
B		1
B1	1	
C		
C1	1	1
D		
D1		
E		
n.a.	4	1
Without affiliation		
A1+B1+C1+D1	5	9
B+C+D+E		1

FIELD STRUCTURE OF OUTPUTS

Field structure of outputs	Outputs (evaluated)	Outputs (not evaluated)
Economics	3	5
n.a.	4	1
Sociology	2	3
Education Educational Research	1	
Political Science		1
Psychology Multidisciplinary		1
Social Issues		1
Social Sciences Interdisciplinary	1	

Total number of outputs: outputs of the team published during the evaluated period 2015-2019.

Evaluated outputs: selected outputs submitted by the team to the Phase I of evaluation.

Outputs used for bibliometry: subset of all outputs registered in the Web of Science; document type: article, review or proceedings paper.

Quality of outputs by journal ranking: number of outputs in top decile (1*) and quartiles (1-4) by AIS of journals; n. a. - outputs in journals without AIS; orange: outputs from the Phase I, blue: the other outputs of the team.

Quality of outputs by intensity of citations: number of outputs in the top decile (1*) and in quartiles (1, 2, 3+4) determined from the list of outputs ordered by the number of citations (downloaded from the Web of Science at the beginning of evaluation) for each subject category, year, and type of output; n. a. – the data are not robust enough for relevant judgement; orange: outputs from the Phase I, blue: the other outputs of the team.

Types of collaboration: outputs created exclusively in a particular institute are marked by A1, outputs created within national cooperation by max. 5 organizations are marked by B, outputs created within international cooperation by max. 5 organizations are marked C, outputs created within large collaboration exceeding 5 organizations are marked D, outputs created within large international collaboration are marked E. It is distinguished by marking B1/B, C1/C and D1/D whether the output has/does not have a corresponding author from a particular team.

Field structure of outputs: number of outputs of the team in different subject categories (subfields); if the output is assigned to more than one field, the field where the publication performs best (assessed by Quality of outputs by journals ranking) is taken; the table shows up to 20 fields.

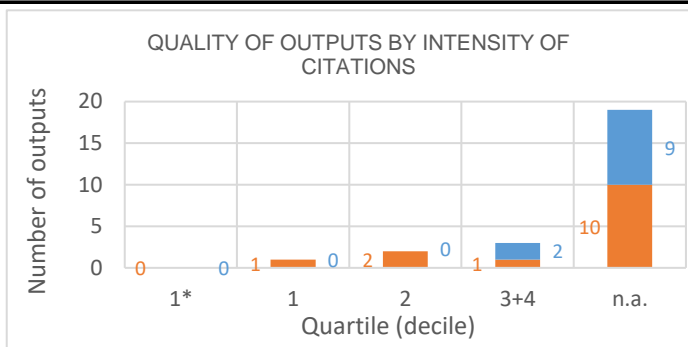
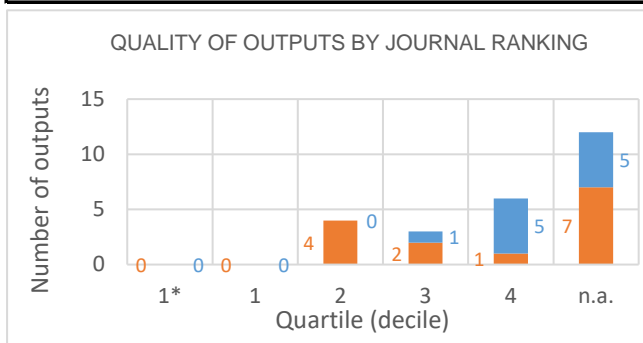
Detailed explanation of the indicators is provided in the Methodology of evaluation, Annex 2 – Bibliometrics.

NOTE: The significance of bibliometrics in social sciences is very limited.

Evaluation of the Research and Professional Activities of the Institutes of the Czech Academy of Sciences for 2015–2019

BIBLIOMETRIC PARAMETERS OF ALL OUTPUTS INCLUDING THOSE EVALUATED IN THE PHASE I.

Institute: Institute of Sociology of the CAS, v. v. i.
Team: Gender & Sociology
Head: PhDr. Alena Křížková, Ph.D.
Field: Sociology
Total number of outputs: 25 **Evaluated outputs:** 14



TYPES OF COLLABORATION

Collaboration	Outputs (evaluated)	Outputs (not evaluated)
A1	5	8
B	1	
B1	2	
C	3	2
C1		
D		
D1		
E		
n.a.	3	1
Without affiliation		
A1+B1+C1+D1	7	8
B+C+D+E	4	2

FIELD STRUCTURE OF OUTPUTS

Field structure of outputs	Outputs (evaluated)	Outputs (not evaluated)
Sociology	3	8
Women s Studies	3	2
Business	3	1
n.a.	3	1
Management	2	1
Demography		1
Development Studies	1	
Economics	1	
Engineering Environmental	1	
Environmental Sciences	1	
Green Sustainable Science Technolo	1	
Industrial Relations Labor	1	
Political Science	1	
Public Administration	1	
Social Issues	1	
Social Work	1	

Total number of outputs: outputs of the team published during the evaluated period 2015-2019.

Evaluated outputs: selected outputs submitted by the team to the Phase I of evaluation.

Outputs used for bibliometry: subset of all outputs registered in the Web of Science; document type: article, review or proceedings paper.

Quality of outputs by journal ranking: number of outputs in top decile (1*) and quartiles (1-4) by AIS of journals; n. a. - outputs in journals without AIS; orange: outputs from the Phase I, blue: the other outputs of the team.

Quality of outputs by intensity of citations: number of outputs in the top decile (1*) and in quartiles (1, 2, 3+4) determined from the list of outputs ordered by the number of citations (downloaded from the Web of Science at the beginning of evaluation) for each subject category, year, and type of output; n. a. – the data are not robust enough for relevant judgement; orange: outputs from the Phase I, blue: the other outputs of the team.

Types of collaboration: outputs created exclusively in a particular institute are marked by A1, outputs created within national cooperation by max. 5 organizations are marked by B, outputs created within international cooperation by max. 5 organizations are marked C, outputs created within large collaboration exceeding 5 organizations are marked D, outputs created within large international collaboration are marked E. It is distinguished by marking B1/B, C1/C and D1/D whether the output has/does not have a corresponding author from a particular team.

Field structure of outputs: number of outputs of the team in different subject categories (subfields); if the output is assigned to more than one field, the field where the publication performs best (assessed by Quality of outputs by journals ranking) is taken; the table shows up to 20 fields.

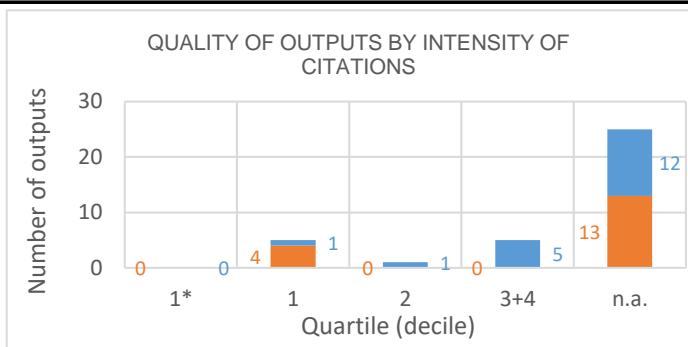
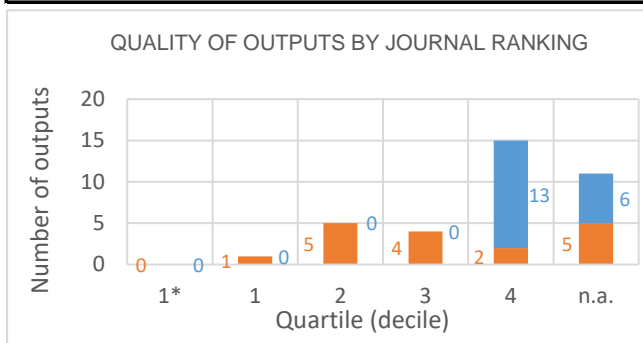
Detailed explanation of the indicators is provided in the Methodology of evaluation, Annex 2 – Bibliometrics.

NOTE: The significance of bibliometrics in social sciences is very limited.

Evaluation of the Research and Professional Activities of the Institutes of the Czech Academy of Sciences for 2015–2019

BIBLIOMETRIC PARAMETERS OF ALL OUTPUTS INCLUDING THOSE EVALUATED IN THE PHASE I.

Institute: Institute of Sociology of the CAS, v. v. i.
Team: Local and Regional Studies
Head: Mgr. Josef Bernard, Ph.D.
Field: Sociology
Total number of outputs: 36 **Evaluated outputs:** 17



TYPES OF COLLABORATION

Collaboration	Outputs (evaluated)	Outputs (not evaluated)
A1	10	11
B		4
B1	1	2
C	3	1
C1	2	1
D		
D1		
E		
n.a.	1	
Without affiliation		
A1+B1+C1+D1	13	14
B+C+D+E	3	5

FIELD STRUCTURE OF OUTPUTS

Field structure of outputs	Outputs (evaluated)	Outputs (not evaluated)
Sociology	6	8
Geography	7	6
Political Science	3	3
Public Administration	3	
Psychology Multidisciplinary		2
Regional Urban Planning	2	
Urban Studies	2	
Cultural Studies	1	
Environmental Studies	1	
Geography Physical	1	
Humanities Multidisciplinary		1
International Relations		1
n.a.	1	
Social Sciences Interdisciplinary	1	

Total number of outputs: outputs of the team published during the evaluated period 2015-2019.

Evaluated outputs: selected outputs submitted by the team to the Phase I of evaluation.

Outputs used for bibliometry: subset of all outputs registered in the Web of Science; document type: article, review or proceedings paper.

Quality of outputs by journal ranking: number of outputs in top decile (1*) and quartiles (1-4) by AIS of journals; n. a. - outputs in journals without AIS; orange: outputs from the Phase I, blue: the other outputs of the team.

Quality of outputs by intensity of citations: number of outputs in the top decile (1*) and in quartiles (1, 2, 3+4) determined from the list of outputs ordered by the number of citations (downloaded from the Web of Science at the beginning of evaluation) for each subject category, year, and type of output; n. a. – the data are not robust enough for relevant judgement; orange: outputs from the Phase I, blue: the other outputs of the team.

Types of collaboration: outputs created exclusively in a particular institute are marked by A1, outputs created within national cooperation by max. 5 organizations are marked by B, outputs created within international cooperation by max. 5 organizations are marked C, outputs created within large collaboration exceeding 5 organizations are marked D, outputs created within large international collaboration are marked E. It is distinguished by marking B1/B, C1/C and D1/D whether the output has/does not have a corresponding author from a particular team.

Field structure of outputs: number of outputs of the team in different subject categories (subfields); if the output is assigned to more than one field, the field where the publication performs best (assessed by Quality of outputs by journals ranking) is taken; the table shows up to 20 fields.

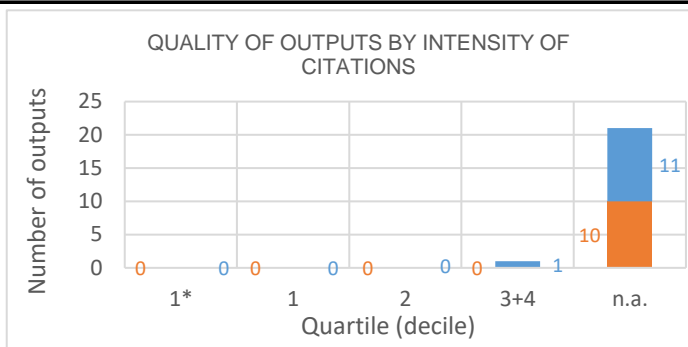
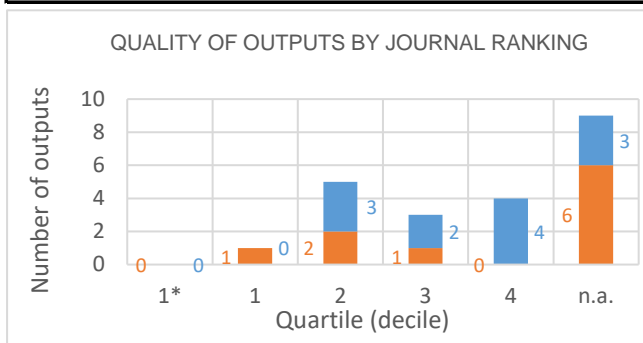
Detailed explanation of the indicators is provided in the Methodology of evaluation, Annex 2 – Bibliometrics.

NOTE: The significance of bibliometrics in social sciences is very limited.

Evaluation of the Research and Professional Activities of the Institutes of the Czech Academy of Sciences for 2015–2019

BIBLIOMETRIC PARAMETERS OF ALL OUTPUTS INCLUDING THOSE EVALUATED IN THE PHASE I.

Institute: Institute of Sociology of the CAS, v. v. i.
Team: National Contact Centre for Gender & Science
Head: Mgr. Marcela Linková, Ph.D.
Field: Sociology
Total number of outputs: 22 **Evaluated outputs:** 10



TYPES OF COLLABORATION

Collaboration	Outputs (evaluated)	Outputs (not evaluated)
A1	3	7
B	1	2
B1		1
C		1
C1	1	
D		
D1		
E		
n.a.	5	1
Without affiliation		
A1+B1+C1+D1	4	8
B+C+D+E	1	3

FIELD STRUCTURE OF OUTPUTS

Field structure of outputs	Outputs (evaluated)	Outputs (not evaluated)
Sociology	1	6
n.a.	5	1
Education Educational Research	2	1
Social Sciences Biomedical	2	1
Area Studies		2
Computer Science Information System		2
Information Science Library Science		2
Public Environmental Occupational H	1	1
Anthropology	1	
Asian Studies		1
History Philosophy Of Science		1
Reproductive Biology	1	
Social Sciences Interdisciplinary	1	

Total number of outputs: outputs of the team published during the evaluated period 2015-2019.

Evaluated outputs: selected outputs submitted by the team to the Phase I of evaluation.

Outputs used for bibliometry: subset of all outputs registered in the Web of Science; document type: article, review or proceedings paper.

Quality of outputs by journal ranking: number of outputs in top decile (1*) and quartiles (1-4) by AIS of journals; n. a. - outputs in journals without AIS; orange: outputs from the Phase I, blue: the other outputs of the team.

Quality of outputs by intensity of citations: number of outputs in the top decile (1*) and in quartiles (1, 2, 3+4) determined from the list of outputs ordered by the number of citations (downloaded from the Web of Science at the beginning of evaluation) for each subject category, year, and type of output; n. a. – the data are not robust enough for relevant judgement; orange: outputs from the Phase I, blue: the other outputs of the team.

Types of collaboration: outputs created exclusively in a particular institute are marked by A1, outputs created within national cooperation by max. 5 organizations are marked by B, outputs created within international cooperation by max. 5 organizations are marked C, outputs created within large collaboration exceeding 5 organizations are marked D, outputs created within large international collaboration are marked E. It is distinguished by marking B1/B, C1/C and D1/D whether the output has/does not have a corresponding author from a particular team.

Field structure of outputs: number of outputs of the team in different subject categories (subfields); if the output is assigned to more than one field, the field where the publication performs best (assessed by Quality of outputs by journals ranking) is taken; the table shows up to 20 fields.

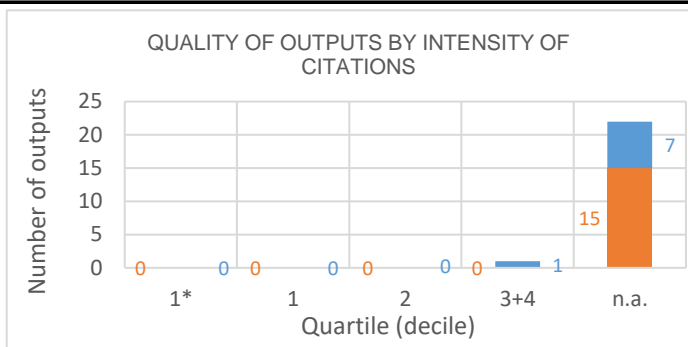
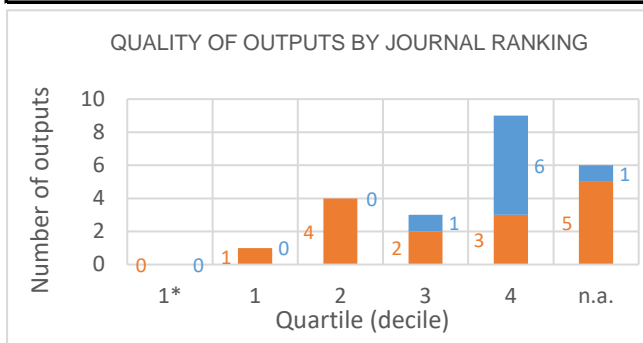
Detailed explanation of the indicators is provided in the Methodology of evaluation, Annex 2 – Bibliometrics.

NOTE: The significance of bibliometrics in social sciences is very limited.

Evaluation of the Research and Professional Activities of the Institutes of the Czech Academy of Sciences for 2015–2019

BIBLIOMETRIC PARAMETERS OF ALL OUTPUTS INCLUDING THOSE EVALUATED IN THE PHASE I.

Institute: Institute of Sociology of the CAS, v. v. i.
Team: Political Sociology
Head: PhDr. Zdenka Mansfeldová, CSc.
Field: Political science
Total number of outputs: 23 **Evaluated outputs:** 15



TYPES OF COLLABORATION

Collaboration	Outputs (evaluated)	Outputs (not evaluated)
A1	7	5
B		
B1		2
C	2	
C1	2	
D		
D1		
E		
n.a.	4	
Without affiliation		1
A1+B1+C1+D1	9	7
B+C+D+E	2	

FIELD STRUCTURE OF OUTPUTS

Field structure of outputs	Outputs (evaluated)	Outputs (not evaluated)
Sociology	4	5
Political Science	5	3
n.a.	4	
Social Sciences Interdisciplinary	2	
Economics		1
Education Educational Research	1	
International Relations		1

Total number of outputs: outputs of the team published during the evaluated period 2015-2019.

Evaluated outputs: selected outputs submitted by the team to the Phase I of evaluation.

Outputs used for bibliometry: subset of all outputs registered in the Web of Science; document type: article, review or proceedings paper.

Quality of outputs by journal ranking: number of outputs in top decile (1*) and quartiles (1-4) by AIS of journals; n. a. - outputs in journals without AIS; orange: outputs from the Phase I, blue: the other outputs of the team.

Quality of outputs by intensity of citations: number of outputs in the top decile (1*) and in quartiles (1, 2, 3+4) determined from the list of outputs ordered by the number of citations (downloaded from the Web of Science at the beginning of evaluation) for each subject category, year, and type of output; n. a. – the data are not robust enough for relevant judgement; orange: outputs from the Phase I, blue: the other outputs of the team.

Types of collaboration: outputs created exclusively in a particular institute are marked by A1, outputs created within national cooperation by max. 5 organizations are marked by B, outputs created within international cooperation by max. 5 organizations are marked C, outputs created within large collaboration exceeding 5 organizations are marked D, outputs created within large international collaboration are marked E. It is distinguished by marking B1/B, C1/C and D1/D whether the output has/does not have a corresponding author from a particular team.

Field structure of outputs: number of outputs of the team in different subject categories (subfields); if the output is assigned to more than one field, the field where the publication performs best (assessed by Quality of outputs by journals ranking) is taken; the table shows up to 20 fields.

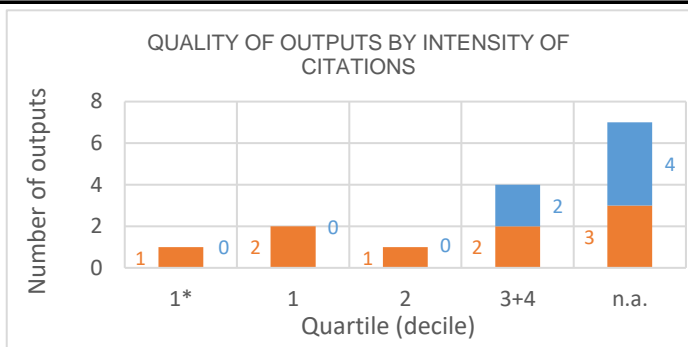
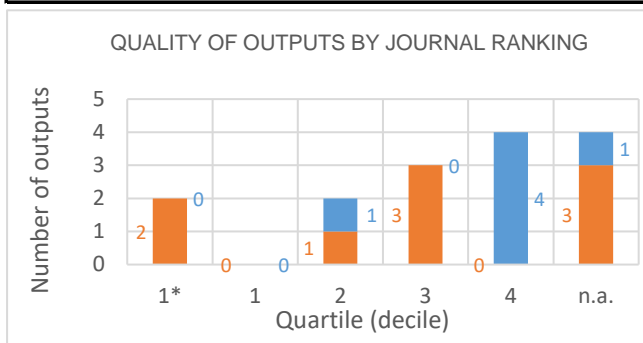
Detailed explanation of the indicators is provided in the Methodology of evaluation, Annex 2 – Bibliometrics.

NOTE: The significance of bibliometrics in social sciences is very limited.

Evaluation of the Research and Professional Activities of the Institutes of the Czech Academy of Sciences for 2015–2019

BIBLIOMETRIC PARAMETERS OF ALL OUTPUTS INCLUDING THOSE EVALUATED IN THE PHASE I.

Institute: Institute of Sociology of the CAS, v. v. i.
Team: Socioeconomics of Housing
Head: Ing. Mgr. Martin Lux, Ph.D.
Field: Sociology
Total number of outputs: 15 **Evaluated outputs:** 9



TYPES OF COLLABORATION

Collaboration	Outputs (evaluated)	Outputs (not evaluated)
A1	4	4
B		1
B1	2	1
C	1	
C1	1	
D		
D1		
E		
n.a.	1	
Without affiliation		
A1+B1+C1+D1	7	5
B+C+D+E	1	1

FIELD STRUCTURE OF OUTPUTS

Field structure of outputs	Outputs (evaluated)	Outputs (not evaluated)
Urban Studies	6	1
Environmental Studies	5	
Regional Urban Planning	4	
Sociology	1	3
Geography	1	1
Cultural Studies	1	
Economics	1	
Engineering Electrical Electronic		1
Engineering Multidisciplinary		1
n.a.	1	

Total number of outputs: outputs of the team published during the evaluated period 2015-2019.

Evaluated outputs: selected outputs submitted by the team to the Phase I of evaluation.

Outputs used for bibliometry: subset of all outputs registered in the Web of Science; document type: article, review or proceedings paper.

Quality of outputs by journal ranking: number of outputs in top decile (1*) and quartiles (1-4) by AIS of journals; n. a. - outputs in journals without AIS; orange: outputs from the Phase I, blue: the other outputs of the team.

Quality of outputs by intensity of citations: number of outputs in the top decile (1*) and in quartiles (1, 2, 3+4) determined from the list of outputs ordered by the number of citations (downloaded from the Web of Science at the beginning of evaluation) for each subject category, year, and type of output; n. a. – the data are not robust enough for relevant judgement; orange: outputs from the Phase I, blue: the other outputs of the team.

Types of collaboration: outputs created exclusively in a particular institute are marked by A1, outputs created within national cooperation by max. 5 organizations are marked by B, outputs created within international cooperation by max. 5 organizations are marked C, outputs created within large collaboration exceeding 5 organizations are marked D, outputs created within large international collaboration are marked E. It is distinguished by marking B1/B, C1/C and D1/D whether the output has/does not have a corresponding author from a particular team.

Field structure of outputs: number of outputs of the team in different subject categories (subfields); if the output is assigned to more than one field, the field where the publication performs best (assessed by Quality of outputs by journals ranking) is taken; the table shows up to 20 fields.

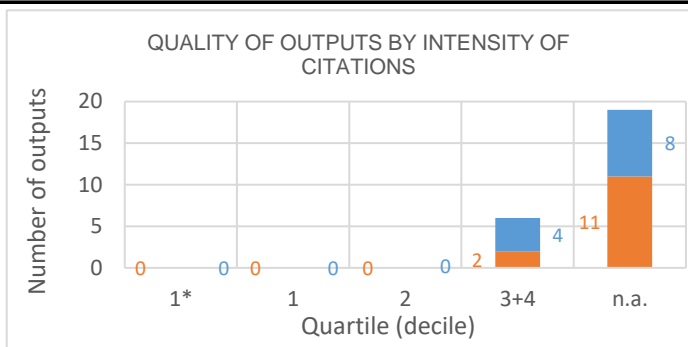
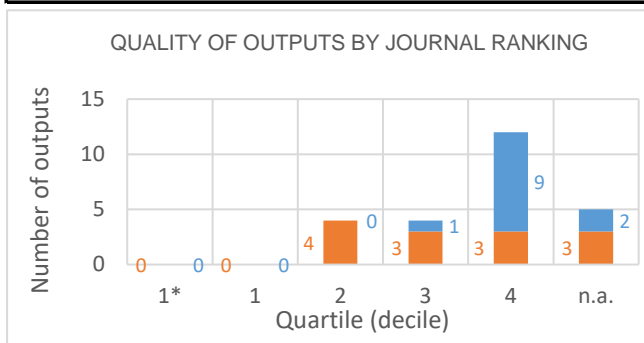
Detailed explanation of the indicators is provided in the Methodology of evaluation, Annex 2 – Bibliometrics.

NOTE: The significance of bibliometrics in social sciences is very limited.

Evaluation of the Research and Professional Activities of the Institutes of the Czech Academy of Sciences for 2015–2019

BIBLIOMETRIC PARAMETERS OF ALL OUTPUTS INCLUDING THOSE EVALUATED IN THE PHASE I.

Institute: Institute of Sociology of the CAS, v. v. i.
Team: Value Orientations in Society
Head: Mgr. et Mgr. Klára Plecítá, Ph.D.
Field: Sociology
Total number of outputs: 25 **Evaluated outputs:** 13



TYPES OF COLLABORATION

Collaboration	Outputs (evaluated)	Outputs (not evaluated)
A1	8	8
B		3
B1	3	1
C	1	
C1		
D		
D1		
E		
n.a.	1	
Without affiliation		
A1+B1+C1+D1	11	9
B+C+D+E	1	3

FIELD STRUCTURE OF OUTPUTS

Field structure of outputs	Outputs (evaluated)	Outputs (not evaluated)
Sociology	1	9
Criminology Penology	3	
Political Science	3	
International Relations	2	
Psychology Multidisciplinary	1	1
Social Sciences Interdisciplinary	2	
Anthropology	1	
Area Studies	1	
Biochemistry Molecular Biology		1
Biophysics		1
Demography	1	
Family Studies	1	
Geography	1	
n.a.	1	
Public Environmental Occupational H		1
Statistics Probability	1	

Total number of outputs: outputs of the team published during the evaluated period 2015-2019.

Evaluated outputs: selected outputs submitted by the team to the Phase I of evaluation.

Outputs used for bibliometry: subset of all outputs registered in the Web of Science; document type: article, review or proceedings paper.

Quality of outputs by journal ranking: number of outputs in top decile (1*) and quartiles (1-4) by AIS of journals; n. a. - outputs in journals without AIS; orange: outputs from the Phase I, blue: the other outputs of the team.

Quality of outputs by intensity of citations: number of outputs in the top decile (1*) and in quartiles (1, 2, 3+4) determined from the list of outputs ordered by the number of citations (downloaded from the Web of Science at the beginning of evaluation) for each subject category, year, and type of output; n. a. – the data are not robust enough for relevant judgement; orange: outputs from the Phase I, blue: the other outputs of the team.

Types of collaboration: outputs created exclusively in a particular institute are marked by A1, outputs created within national cooperation by max. 5 organizations are marked by B, outputs created within international cooperation by max. 5 organizations are marked C, outputs created within large collaboration exceeding 5 organizations are marked D, outputs created within large international collaboration are marked E. It is distinguished by marking B1/B, C1/C and D1/D whether the output has/does not have a corresponding author from a particular team.

Field structure of outputs: number of outputs of the team in different subject categories (subfields); if the output is assigned to more than one field, the field where the publication performs best (assessed by Quality of outputs by journals ranking) is taken; the table shows up to 20 fields.

Detailed explanation of the indicators is provided in the Methodology of evaluation, Annex 2 – Bibliometrics.

NOTE: The significance of bibliometrics in social sciences is very limited.