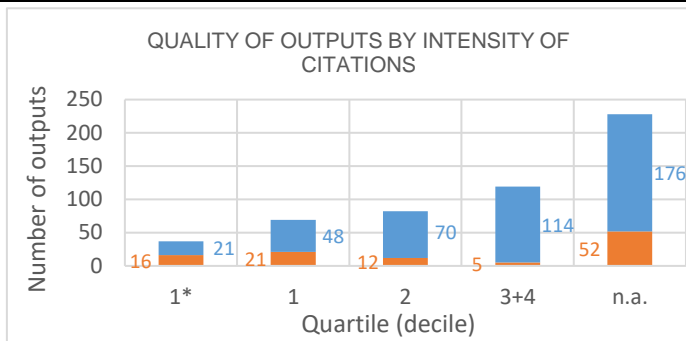
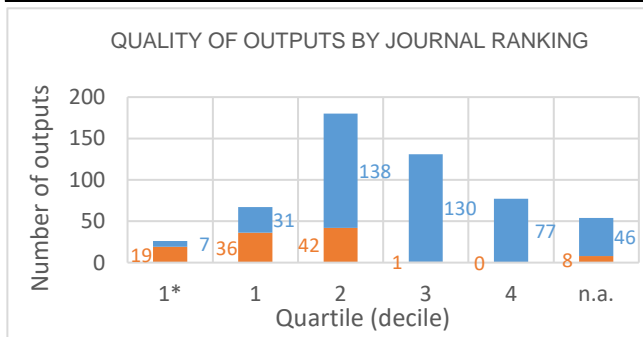


Evaluation of the Research and Professional Activities of the Institutes of the Czech Academy of Sciences for 2015–2019

BIBLIOMETRIC PARAMETERS OF ALL OUTPUTS INCLUDING THOSE EVALUATED IN THE PHASE I.

Institute: Institute of Vertebrate Biology of the CAS, v. v. i.
Team: Vertebrate Biology team
Head: Jan Zukal
Field: Biological sciences
Total number of outputs: 535 **Evaluated outputs:** 106



TYPES OF COLLABORATION

Collaboration	Outputs (evaluated)	Outputs (not evaluated)
A1	11	34
B	3	49
B1	19	57
C	14	74
C1	13	56
D	17	112
D1	22	24
E		
n.a.	7	19
Without affiliation		4
A1+B1+C1+D1	65	171
B+C+D+E	34	235

FIELD STRUCTURE OF OUTPUTS

Field structure of outputs	Outputs (evaluated)	Outputs (not evaluated)
Zoology	12	99
Ecology	36	72
Evolutionary Biology	33	58
Parasitology	2	54
Genetics Heredity	18	31
Marine Freshwater Biology	5	33
Multidisciplinary Sciences	7	29
Biochemistry Molecular Biology	14	18
Biology	12	18
Ornithology	5	23
Fisheries	1	26
n.a.	7	19
Behavioral Sciences	7	16
Infectious Diseases	2	21
Microbiology	6	15
Biodiversity Conservation	3	17
Environmental Sciences	5	15
Veterinary Sciences	1	18
Tropical Medicine	1	16
Public Environmental Occupational H	1	10

Total number of outputs: outputs of the team published during the evaluated period 2015-2019.

Evaluated outputs: selected outputs submitted by the team to the Phase I of evaluation.

Outputs used for bibliometry: subset of all outputs registered in the Web of Science; document type: article, review or proceedings paper.

Quality of outputs by journal ranking: number of outputs in top decile (1*) and quartiles (1-4) by AIS of journals; n. a. - outputs in journals without AIS; orange: outputs from the Phase I, blue: the other outputs of the team.

Quality of outputs by intensity of citations: number of outputs in the top decile (1*) and in quartiles (1, 2, 3+4) determined from the list of outputs ordered by the number of citations (downloaded from the Web of Science at the beginning of evaluation) for each subject category, year, and type of output; n. a. – the data are not robust enough for relevant judgement; orange: outputs from the Phase I, blue: the other outputs of the team.

Types of collaboration: outputs created exclusively in a particular institute are marked by A1, outputs created within national cooperation by max. 5 organizations are marked by B, outputs created within international cooperation by max. 5 organizations are marked C, outputs created within large collaboration exceeding 5 organizations are marked D, outputs created within large international collaboration are marked E. It is distinguished by marking B1/B, C1/C and D1/D whether the output has/does not have a corresponding author from a particular team.

Field structure of outputs: number of outputs of the team in different subject categories (subfields); if the output is assigned to more than one field, the field where the publication performs best (assessed by Quality of outputs by journals ranking) is taken; the table shows up to 20 fields.

Detailed explanation of the indicators is provided in the Methodology of evaluation, Annex 2 – Bibliometrics.